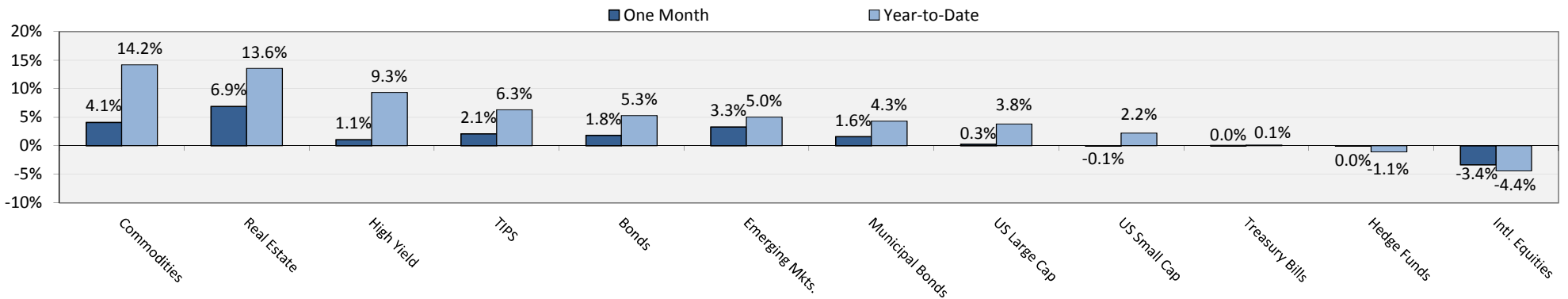
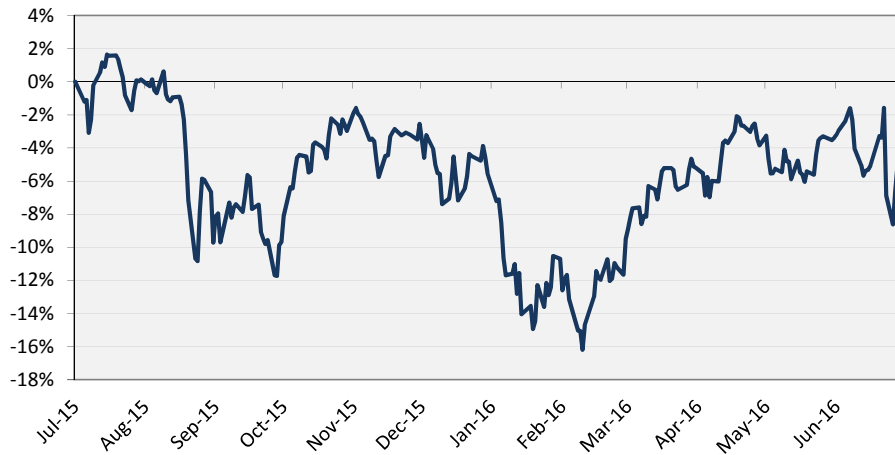


Index Returns Ending 6/30/2016



Global Stocks One-Year Performance (MSCI World Index)



	12/31/14	12/31/15	6/30/16	YTD Change
--	----------	----------	---------	------------

Economic Figures

Real GDP Growth	2.2%	2.1%	2.1%	-0.1%
Core CPI	1.7%	2.0%	2.2%	+0.2%
Unemployment Rate	5.8%	5.0%	4.7%	-0.3%
Consumer Confidence	92.6	96.5	98.0	+1.5

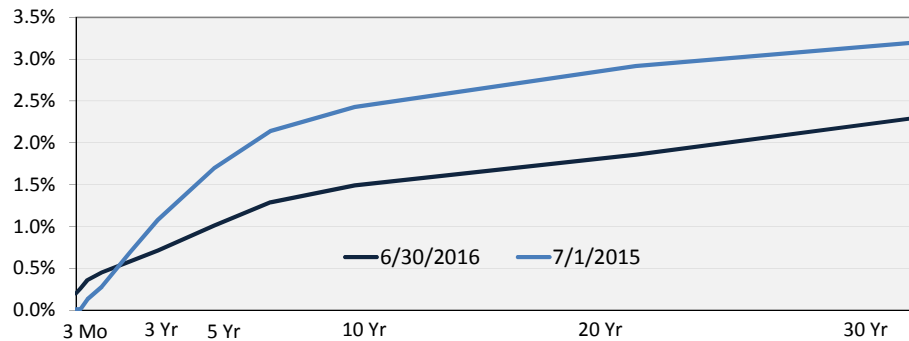
Currencies/Commodities

Dollar / Euro	1.21	1.09	1.11	1.8%
Yen / Dollar	120.0	120.4	102.9	-14.5%
WTI Crude Oil (\$/barrel)	\$52.31	\$36.91	\$48.56	31.6%
Gold (\$/oz)	\$1,177.34	\$1,074.21	\$1,327.59	23.6%

Select Interest Rates

30-Yr Mortgage Rate	3.87%	4.01%	3.48%	-0.53%
6 Month CD Rate	0.16%	0.13%	0.14%	+0.01%
High Yield Credit Spread	4.98%	6.95%	6.26%	-0.69%

Yield Curve



10 Year Treasury Yield

